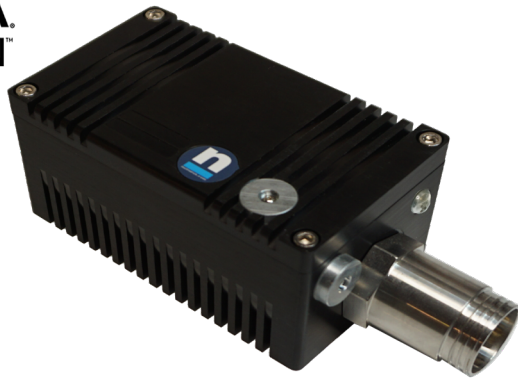




NVIDIA
JETSON™

| Powered by **NEPI**



Hardware Features

- 1km depth rated housing
- NVIDIA Jetson GPU Processor
- 1x Gigabit Ethernet Input Port
- 1 TB Solid State Storage

NEPI Open-Source Software

- Plug and Play Hardware Drivers
- Data Logging System
- AI Detection & Targeting Apps
- PT and Robotic Automation Apps
- Robot Operating System (ROS) API
- Browser-Based UI System

S2X Smart System Platforms

S2X smart system platforms with Numurus' NEPI Engine software provide developers a rapid turnkey solution for adding AI and autonomy to any robotic, smart sensing project, or automation project. Learn more about Numurus' S2X open-hardware solutions and NEPI software at: www.numurus.com

Hardware

GPU	NVIDIA Jetson Nano, Xavier NX or Orin NX Options
Internal Storage	1 TB M.2 Card (2 TB Upgrade Option)

Communications

Ethernet Comms	1x GigE
----------------	---------

Software

Ubuntu	20.04
NVIDIA Jetpack	5.1.X
NEPI Engine Software	Latest release version

Electrical

Input Voltage Range	10-36 VDC
Power Estimates	10-15 W

Mechanical

Main Connector	SubConn DBCR2013M (GigE)
Housing Dimensions	18.1 cm x 76.20 cm x 65.5 cm
Weight in Air/Water	2.5 lb / 1.5 lb
Depth Rating	1 km

