

# numurus

# WHITE PAPER

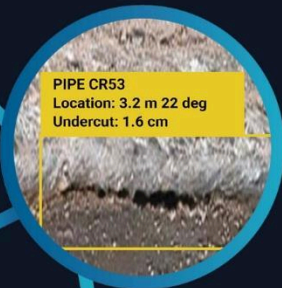
## Smart Data Solutions

Turnkey Edge-AI Solutions for  
Science and Industry

Tracking



Inspection



Monitoring



Searching



[www.numurus.com](http://www.numurus.com)

# Smart Data Solutions

## For Intelligent Data Collection, Processing, and Automation on the Edge

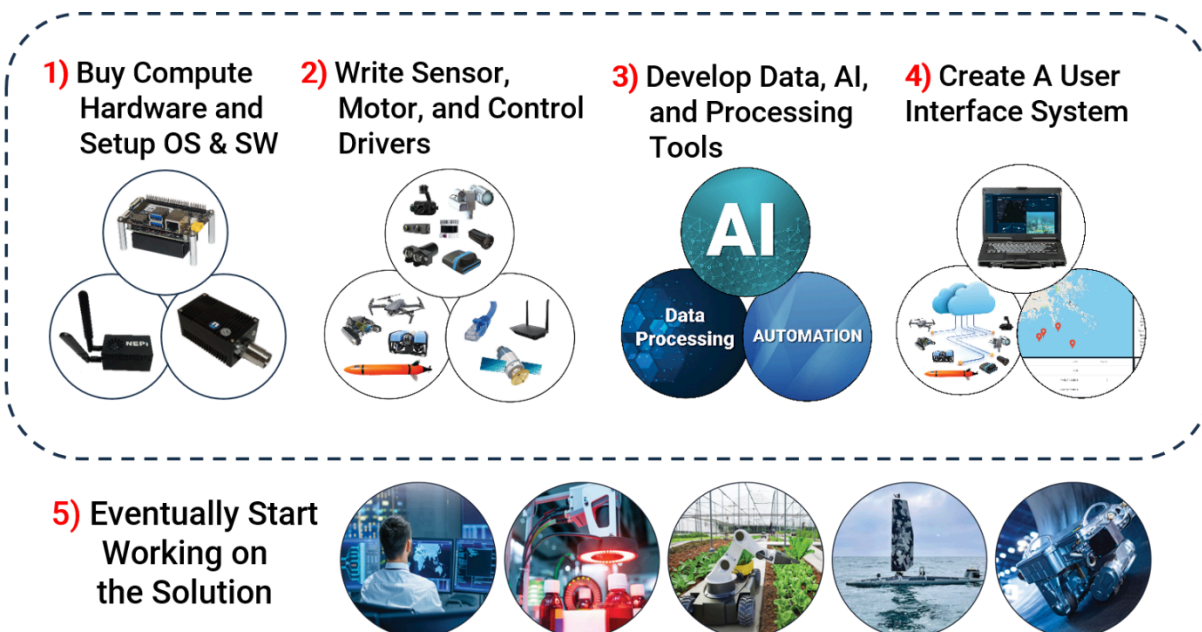
### THE CHALLENGE

Across industries, organizations are increasingly looking to integrate AI and other industry 4.0 technologies into their products and services to improve how they collect, process, and act on data in real-time. But turning that ambition into reality is often far from simple. Complex programming requirements, integration hurdles, and resource constraints create steep barriers to adoption.

As a result, many teams remain stuck with manual, time-consuming workflows that are prone to error—while attempts to develop smart data systems from scratch can take months or even years, only to stall due to hardware limitations, fragmented tools, and fragile data pipelines that struggle in real-world conditions.

Many organizations end up spending months or even years developing smart data systems from scratch, only to hit roadblocks caused by low-level hardware interfacing, lack of reusable AI tools, or brittle data collection processes that can't adapt to real-world field conditions.

### Typical Smart Solution Development Process



## THE SOLUTION



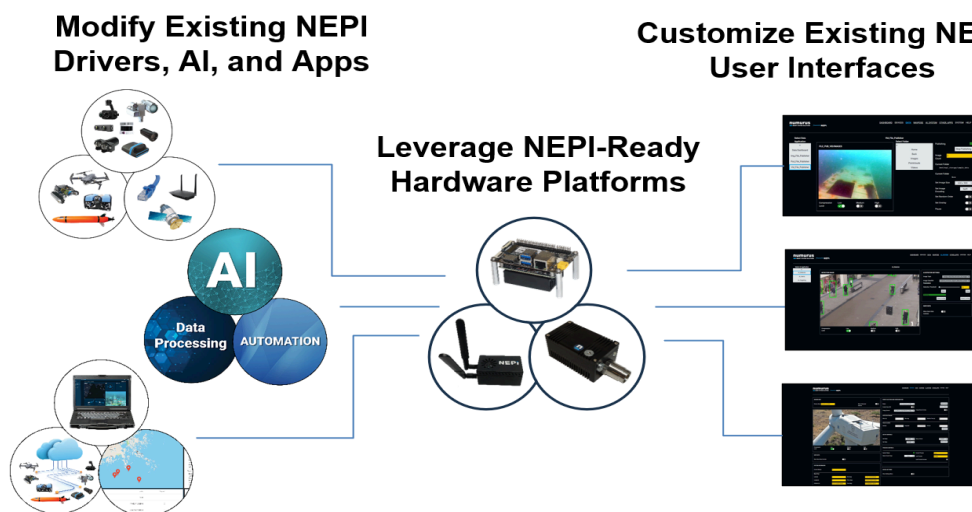
### Turnkey Smart Data Systems

NEPI dramatically accelerates the development and deployment of smart data systems by providing a fully integrated hardware-software stack that turns raw sensor data into AI-enriched, actionable information in the field—in real time.

Instead of starting from zero, users build on:

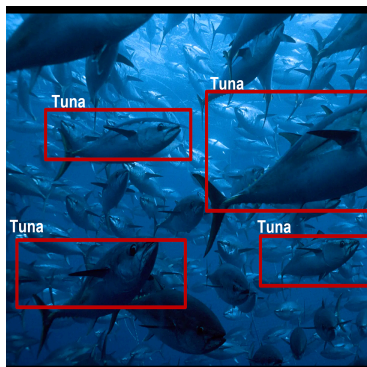
- **Plug-&-Play Hardware Interfacing** (Cameras, Sonar, Lasers, PanTilts, GPS, Robots...)
- **Integrated AI and Automation Applications** (Tracking, Monitoring, Inspection...)
- **Event-Driven Data Collection System** (Triggers, Detections, States...)
- **Low-Code Automation System** (API Based Collection Automation Scripting)

Rather than building everything from scratch, developers can quickly leverage, modify, and customize NEPI components to get their projects done in months, not years.



## APPLICATIONS

NEPI is a versatile platform supporting AI-enabled smart solutions for nearly any application. Some of the more common NEPI applications are described below.



### SMART SENSING SOLUTIONS

Smart sensing solutions aim to create information, not raw data, in real-time at the point of data collection. Such solutions have several benefits including reducing the need for human-in-the-loop operations, providing robotic platforms and manipulators actionable information, and managing enhanced data processing algorithms as environmental conditions or mission objectives change.

### SMART MONITORING SOLUTIONS

Smart monitoring solutions aim to both detect and take actions when specific situations occur. These actions can include a combination of both static and dynamic responses from logging data, sending alerts and statistical data, tracking objects, activating alarms, turning lights on/off, locking/opening doors, or anything else your monitoring solution might require.

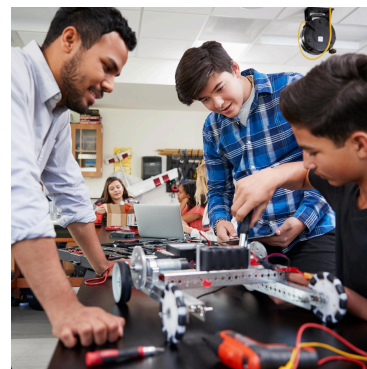


### SMART INSPECTION SOLUTIONS

Smart inspection solutions aim to increase the quality of critical data collection, while reducing the quantity of non-critical data collection for both human and robotic inspection operations. In many situations, the cost of inspection operations is high, so getting the right data during an inspection on the first pass is important to reduce costs and deliver the needed results to stakeholders as fast as possible.

### SMART SYSTEM LEARNING TOOLS

Smart system learning tools aim to help educators leapfrog the technology complexities hampering the STEM education community from teaching the skills students need to work in the rapidly growing AI and automation industry. The challenge is not that the technologies directly related to the skills these students need to learn are overly complex, it is that the underlying supporting technologies are both vast and, in some cases, extremely complex.





## HOW NEPI POWERS INNOVATION ACROSS INDUSTRIES

### INDUSTRY

Numurus delivers turnkey smart data systems that automate industrial monitoring and inspection operations using edge AI — enabling real-time actions without a human-in-the-loop. We accelerate deployment with plug-and-play sensor integration, short project timelines, and open-source flexibility.

### SCIENCE

For field researchers, Numurus transforms time-consuming data collection into automated, real-time workflows. Our edge AI platform simplifies sensor setup and data processing in remote locations, allowing scientists to focus on discovery, not system engineering.

### EDUCATION

Numurus helps educators bring advanced AI and robotics into the classroom without requiring deep technical expertise. Our plug-and-play platforms make it easy to launch real-world STEM projects and competitions, giving students hands-on experience with Industry 4.0 technologies.

### DEVELOPMENT PROCESS

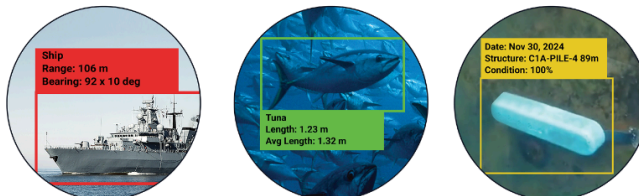
A solid blue horizontal bar is located directly beneath the "DEVELOPMENT PROCESS" section header.

Numurus offers a variety of S2X processors that come pre-installed with the NEPI software system, allowing developers to setup and test their solutions in days not months or years.

## 1) Select an S2X Processor Package



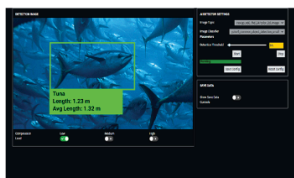
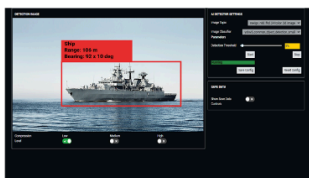
## 2) Upload Your AI Models



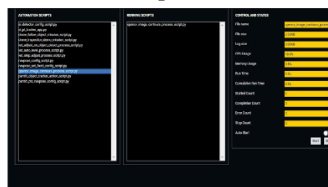
## 3) Connect Your Hardware



## 4) Configure Integrated AI Applications



## 5) Configure Your Automation Scripts

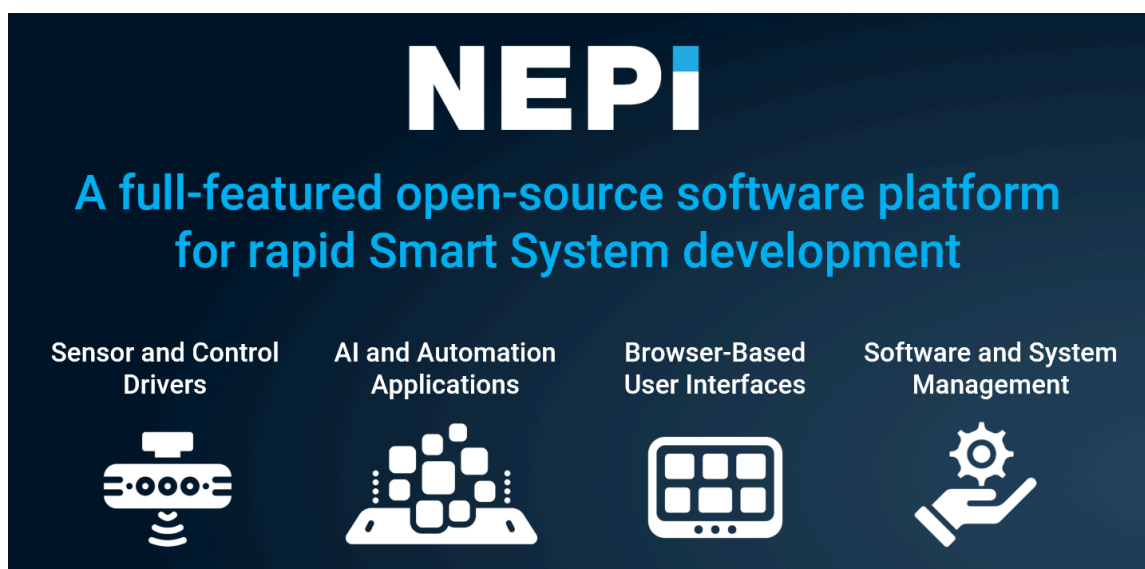


## 6) Deploy and Test

Learn more about Numurus' S2X Smart Data Systems at:  
<https://numurus.com/products-nepi-enabled-hardware/>

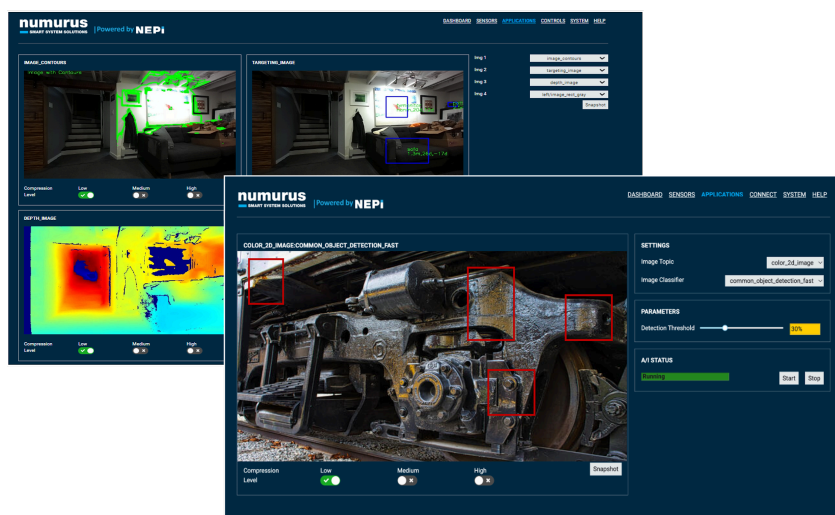
## SOFTWARE OVERVIEW

Numurus' smart system software is built on NEPI, an open-source AI and automation software Platform. The software is comprised of three main components that include a plug-and-play hardware drivers, drag-and-drop AI model support, and customizable automation applications, all managed through an intuitive device hosted user-interface. Together, these components provide a complete environment for rapidly prototyping and deploying Edge-AI enabled automation solutions.



## RESIDENT USER INTERFACE (RUI) SYSTEM

NEPI's Resident User Interface (RUI) provides a customizable browser-based user interface hosted on the NEPI device for configuring, validating, and monitoring system managed components like hardware drivers, AI models, and applications. The NEPI RUI is comprised of a top-level menu with additional submenus appearing under each top menu item as shown and described below:



Learn more about NEPI SOFTWARE SYSTEM at:

<https://nepi.com/documentation/nepi-engine-software-manual/>

## MANAGED SOFTWARE COMPONENTS

While the NEPI software system provides all of the required system management components, it is the device drivers, AI, and applications that NEPI connects that together provide fieldable solutions. While custom developed components can be quickly integrated into a NEPI based solution, Numurus offers a growing suite of NEPI drivers, AI frameworks, and applications to further accelerate solution development efforts.

### HARDWARE ABSTRACTION DRIVERS

Leveraging NEPI's hardware interface class libraries, NEPI device drivers provide plug-and-play connectivity that abstracts each device's native interface to NEPI standard SDK interfaces, allowing downstream applications to just work without needing any details about the hardware specific interfaces.

- Camera, Laser, and Sonar Drivers
- Light and Strobe Drivers
- Pan and Tilt Drivers
- Robotic Control System Drivers
- Nav and Pose Device Drivers

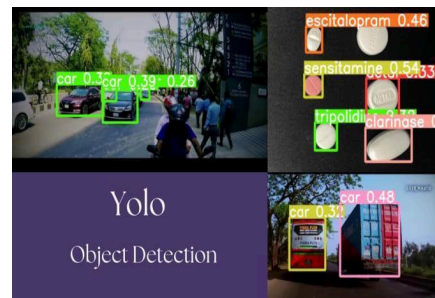


Learn more about NEPI Hardware Drivers at:

<https://nepi.com/documentation/nepi-engine-hardware-driver-interface-system/>

### AI FRAMEWORKS AND MODELS

Leveraging NEPI's ai framework and model interface class libraries, NEPI provides drag-and-drop deployment of ai models that abstract each model's native framework interface to a NEPI standard SDK interface, allowing downstream applications to just work without needing any details about the model processing framework.



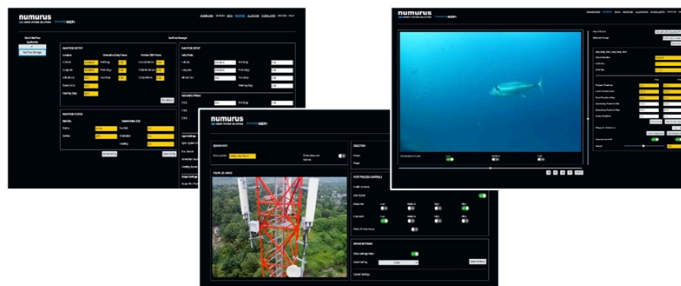
Learn more about NEPI's AI Management System at:

<https://nepi.com/documentation/nepi-engine-hardware-driver-interface-system/>

### APPLICATIONS

Leveraging NEPI's driver and ai framework SDK abstraction interfaces, NEPI applications can quickly be created, modified, and deployed without needing specifics about the hardware and ai components they will ultimately interface with.

- System Management Apps
- Device Management Apps
- Data Management Apps
- AI and Automation Apps





See videos of available NEPI Applications at: <https://www.youtube.com/playlist/nepi3p0>

## NEPI DEVELOPER RESOURCES

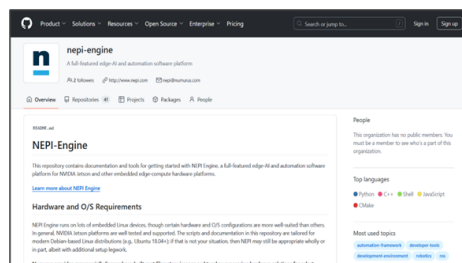
There are significant challenges that should be considered as you embark upon a smart sensor, robotic or Edge-AI smart system development.

### PUBLIC GITHUB REPO

The NEPI GitHub site hosts the NEPI source-code repository and installation instructions.

Learn more about Numurus Products and Services at:

<https://github.com/nepi-engine>

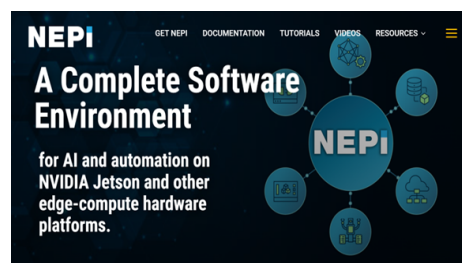


### ONLINE DOCUMENTATION AND TUTORIALS

The NEPI.com website offers developers a large collection of NEPI documentation and tutorials

Learn more about Numurus Products and Services at:

<https://nepi.com>

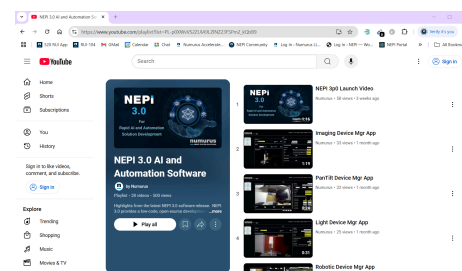


### ONLINE VIDEOS

The NEPI YouTube channel provides a collection of NEPI feature, use, and development tutorial videos.

Learn more about Numurus Products and Services at:

<https://www.youtube.com/playlist/nepi3p0>

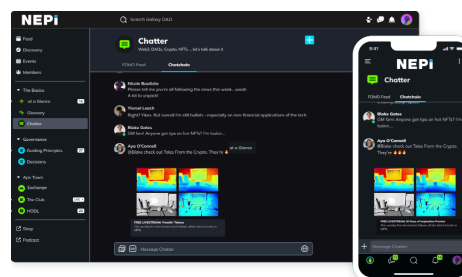


### COMMUNITY SITE

The community.nepi.com website provides both NEPI users and developers to quickly get answers on software issues and discuss future software needs.

Learn more about Numurus Products and Services at:

<https://community.nepi.com/>

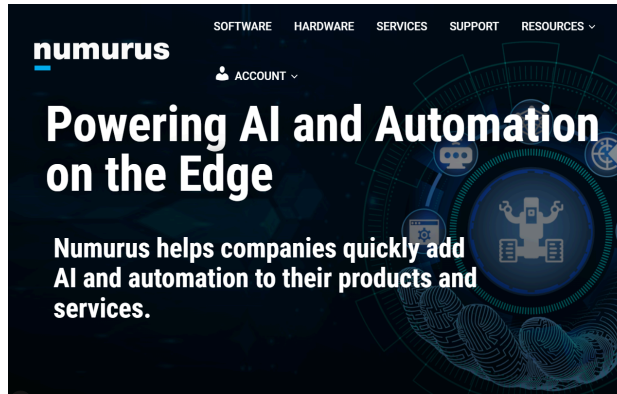


Browse all the resources available at:

<https://nepi.com>

## NUMURUS PRODUCTS & SERVICES

Numurus delivers products and services that reduce the cost, time, and risks of bringing smart inspection and automation solutions to market. Numurus offers turn-key NEPI containerized images, NEPI-enabled edge-compute hardware, and professional services with AI, robotic, and smart sensing specialized engineers that further accelerate solution development efforts.



### TURN-KEY NEPI SOFTWARE (IMAGES & CONTAINERS)

Numurus offers ready-to-deploy pre-built NEPI software images that include an optimized Ubuntu OS and NEPI software environment along with a suite of NEPI hardware drivers, AI frameworks, and applications.



### NEPI-READY COMPUTE HARDWARE (OTS & CUSTOM)

Numurus sells off-the-shelf and custom edge-compute hardware stacks pre-installed with the NEPI software system and NEPI hardware drivers, AI frameworks, and applications.



### PROJECT SUPPORT & PROTOTYPING

Numurus offers smart system software, edge-compute, and prototyping design services to reduce project risks and timeline. Numurus' design services' team includes AI, automation, robotic, and smart sensing specialized engineers that accelerate NEPI-enabled solution implementation efforts.

Learn more about Numurus Products and Services at: <https://numurus.com>

## CUSTOMER SUCCESS STORY

**KEVIN DECKER, CEO | OCEAN AERO** *"The combination of Numurus' NEPI smart system software, off-the-shelf compute hardware, and its responsive engineering support team was a big factor in the success of this project. It saved our internal team from a lot of development work we'd otherwise have to do ourselves"*

Ocean Aero, creator of the TRITON autonomous underwater and surface vehicle (AUSV), launched an internal development effort to deploy at-sea AI-enabled inspection automation capabilities to its TRITON robotic platforms. In support of the Defense Innovation Unit's (DIU) Unmanned Systems for Maritime Domain Awareness program, the first project was to automate 360-degree maritime threat detection between a suite of on-board cameras and on-board artificial intelligence models integrated onto a forward-deployed TRITON AUSV platform, and send detected threat information wirelessly to remote operations centers.

To accelerate their at-sea AI and automated solution development, Ocean Aero turned to Numurus for turnkey edge-compute hardware preinstalled with Numurus' NEPI AI and automation software, a full-featured software platform for AI and automation solution development, which allowed them to rapidly create and field the AI enabled solution they had envisioned.

### At-Sea Threat Detection Automation

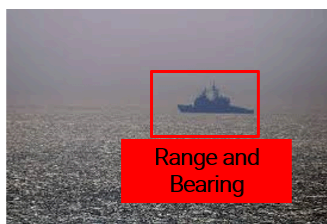
| Powered by **NEPI**



AI Detect  
on multiple camera streams



Estimate  
target range and bearing



Collect Data  
from steerable high-res camera



Within 6 months of kicking off their 360-degree maritime detection automation project leveraging off-the-shelf NEPI-enabled hardware development platforms with minimal support from Numurus' professional services team, Ocean Aero successfully interfaced 5 directional cameras with onboard AI models, then fielded, tested, and demonstrated automated maritime domain awareness capabilities running on its TRITON AUSV systems. This resulted in less dependency on an operator-in-the-loop to detect and identify threats and increased delivery of actionable information to local and remote end-points.



See the complete story and more at: <https://numurus.com/case-studies/>