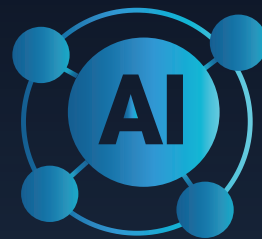


numurus

Smart Data Solutions

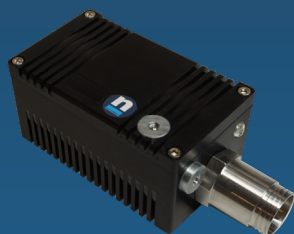
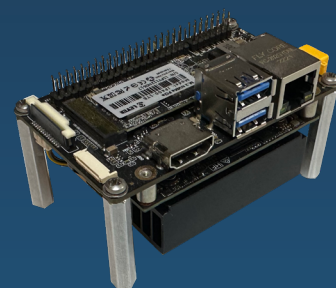


Smart Data Collection Simply Deployed

Turnkey hardware with plug-and-play sensor compatibility and pre-built AI models for smarter, immediate data collection and analysis.

1) Select an S2X AI Hardware

S2X Systems includes powerful GPU processing, 2TB storage, and built-in NEPI AI and automation software.



Environmental Packing is available, including 1k and 3k depth-rated housing for any deployment scenario.

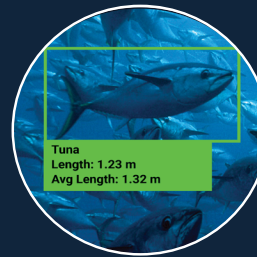


| Powered by **NEPI**

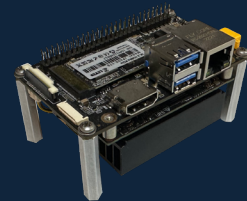
Numurus, Inc
909 NE Boat Street
Seattle, WA 98105
www.numurus.com

AI Integration Made Simple with Plug & Play Solutions

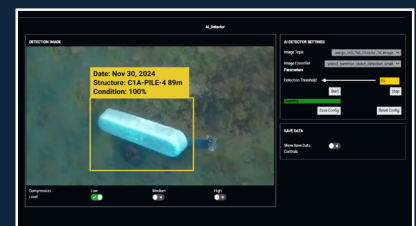
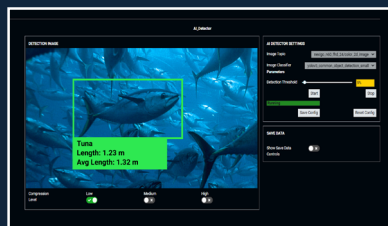
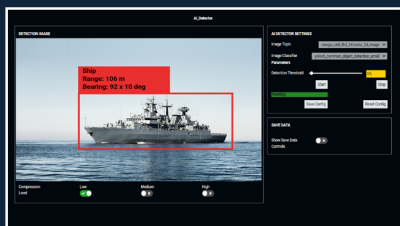
2) Upload Your AI Models



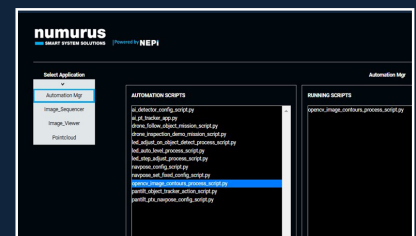
3) Connect Your Hardware



4) Configure Integrated AI Applications



5) Configure Automation Scripts



6) Deploy and Test your Solution!

